



# VT1

**PLUG AND PLAY  
VEHICLE TRACKER**



## LOCATION AND VEHICLE DATA WHEN YOU NEED IT

The Geoforce Cellular Vehicle Tracker is a real-time location reporting module installed in mobile assets such as light commercial trucks. By recording speed, GPS odometer mileage, run time and harsh/unsafe driving, the VT1 enables companies to optimize their fleet operations while bolstering the safety of their most important resource, their people.



### Maximize Service Verification and Worker Safety

Worker productivity is crucial when it comes to turning a profit. However, companies struggle with finding the balance between maintaining increased operational efficiency and their workers' well-being. They often ask themselves, is it possible to have both high operational efficiency and worker safety?

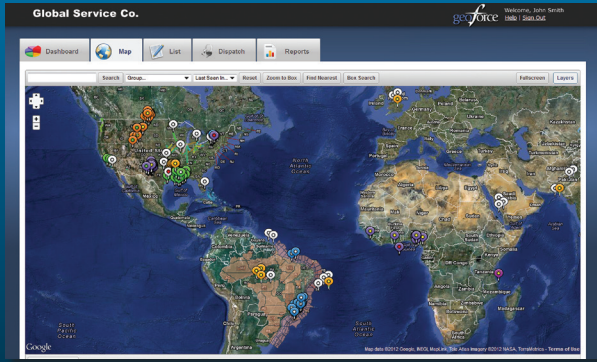
By keeping track of vehicle data like real-time location, engine runtime, and harsh driving, you can confirm that your drivers are meeting demands while keeping a watchful eye on the road.

The VT1 combined with Geoforce's Track and Trace software platform allows you to easily verify service delivery to ensure both worker and customer satisfaction.

### KEY FEATURES

- Plugs into vehicle OBD-II port: no tools or professional installers required
- Compact, low-profile hardware
- Cost-efficient and reliable design
- Operates on LTE Cat 1 wireless networks
- Provides frequent location verification and engine runtime data during operation
- Captured vehicle data stored and viewed in Geoforce *Track and Trace*
  - Vehicle Location (real-time)
  - Engine Runtime
  - Idling
  - Harsh Driving (fast acceleration, harsh cornering/braking)
  - Service Verification (history)

# MANAGE YOUR ASSETS WITH GEOFORCE TRACK AND TRACE



Geoforce designed and built its web-based and mobile software with field operations in mind, enabling us to provide innovative *Track and Trace* software for all your field asset tracking needs.

By combining this cloud-based software with rugged GPS tracking devices and global satellite network integration, Geoforce's *Track and Trace* facilitates asset location and retrieval, rental invoice auditing, service delivery verification, inspection compliance, and equipment maintenance alerts. Because field operations don't have to be chaotic.

## SPECIFICATIONS

### Cellular Network

North American Variant I  
LTE Cat 1                      1900 (B2)/AWS 1700 (B4)/  
700 (B12) MHz

North American Variant II  
LTE Cat 1                      AWS 1700 (B4)/700 (B13) MHz

### GPS (GNSS)

Constellation Support      GPS, GLONASS, SBAS Engine  
(WAAS, EGNOS, MSAS, GAGAN)  
Channels                      55 Channel  
Tracking Sensitivity          -167 dBm  
Acquisition Sensitivity      -157 dBm (hot start)  
   -148 dBm (cold start)  
Location Accuracy            ~2.0m CEP Open Sky  
(GPS SBAS 24 hours static)  
Location Update Rate        Up to 4 Hz AGPS Location  
assistance capable

### Comprehensive I/O

OBD-II                          Interface J1850 PWM, J1850 VPW,  
ISO-9141-2, ISO-14230 (KWP 2000),  
SW-CAN, ISO-15765 CAN  
Serial Port                      2-wire TTL serial interface  
Bluetooth                      Low Energy (BLE)  
Status LEDs                    3 (OBD, GPS, cellular)  
Integrated Buzzer              Programmable audible alert  
Accelerometer                Built in, triple-axis (driver behavior,  
impact detection, motion sensing,  
tilt detection)

### Physical

Dimensions                    1.8 x 2.6 x 1.1" (46 x 67 x 28 mm)  
Weight                          1.75 oz (50 g)

### Electrical

Operating Voltage            12/24 VDC Vehicle Systems  
9-30 VDC (start-up, operating)  
7-32 VDC (momentary)  
Power Consumption         Typical 2mA @ 12 V (deep sleep)  
Typical 40mA @ 12 V (active tracking  
w/ GPS and cell enabled)

### Battery Pack

Battery Capacity             180 mAh  
Battery Technology         Lithium-Ion Charging  
Temperature                 0° to +45° C

### Environmental Standards

Temperature                 -30° to +60° C (connected to  
primary power)  
   -20° to +60° C (operating on battery)  
   -20° to +25° C ≤ 6 months (long term  
storage with battery)  
Humidity                      95% RH @ 50° C non-condensing  
Shock/Vibration              U.S. Military Standards 202G, 810F;  
SAEJ1455  
ESD                              IEC 61000-4-2 (4KV Test)

### Connectors, SIM Access

GPS Antenna                 Internal  
Cellular Antenna             Internal  
SIM Access                    Internal (2FF SIM)

### Certifications

FCC, IC, PTCRB, RoHS Compliant