



THE  
**GEOFORCE  
GATEWAY**

INDOOR SATELLITE  
TRACKING ACCESSORY



## PROVIDING INDOOR FUNCTIONALITY TO SATELLITE-BASED ASSET TRACKERS

The Geoforce Gateway enhances satellite-based asset tracker functionality by providing an alternative cellular data path when data transmission over the satellite network isn't possible. This innovative accessory integrates with the Geoforce GT1 and GT0 satellite asset trackers using a Bluetooth Low Energy (BLE) connection with the tracking device to provide an added data transmission path, which relays location coordinates to the Geoforce Track and Trace system—even when the asset is positioned indoors.

### TRACK AND TRACE



CARGO UNITS



TOTE TANKS



CONTAINERS



ROLL-OFFS



TRAILER CHASSIS



TRAILERS



WASTE DISPOSAL BINS

AND MORE...

### ADVANTAGES

- › Indoor visibility for tagged assets that otherwise report infrequently, or not at all, due to poor sky view
- › Real-time asset entry notifications immediately appear in Geoforce Track and Trace
- › Can acquire location outside of an asset tracker's normally configured reporting cycle
- › Simple, fast installation

### KEY FEATURES

- › BLE technology automatically detects Geoforce trackers
- › Asset location appears in Geoforce Track and Trace even if assets are moved indoors
- › Configurable indoor reporting rates
- › Rugged, cost-efficient and reliable design
- › Compact, ruggedized hardware

# HOW THE GEOFORCE GATEWAY WORKS

Tote Tank with Asset Tracker (outdoors)



Tote Tank with Asset Tracker (moved indoors)



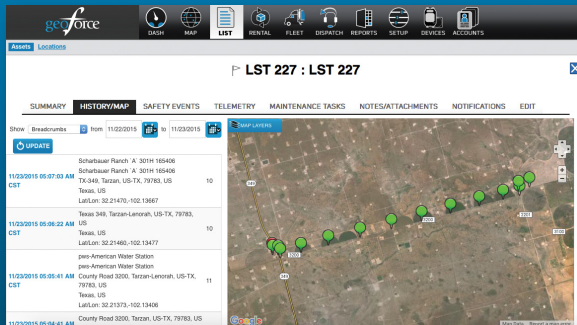
Geoforce Gateway resides in a customer facility and listens for asset tracker, which sends data to the Geoforce Gateway via a BLE signal.



Geoforce displays asset tracker data in Geoforce Track and Trace



## MANAGE YOUR ASSETS WITH GEOFORCE TRACK AND TRACE



Geoforce designed and built its cloud-based system, Track and Trace, with field operations in mind. Available on both desktop and mobile devices, it enables quicker and easier field asset, equipment and truck tracking anytime, anywhere.

By integrating our Geoforce Track and Trace system with our ruggedized satellite- and cellular-based GPS tracking device network it greatly enhances asset location and retrieval, as well as building and exporting reports for: rental invoice auditing, service delivery verification, inspection compliance, equipment maintenance alerts and more.

### COMMUNICATION MODES

LTE (Cellular)

### ENVIRONMENTAL STANDARDS

Operating Temperature: 0-50°C 32-122°F

Enclosure Rating: Corrosive, Oily, Washdown

IP65; NEMA 4X; NEMA 13

### MOUNTING

Screws (qty 2 per gateway needed):

#10 or 1/4" wood or drywall screws

1/4" self-tapping screws

5/16" diameter maximum cap screws

### DEVICE INTERFACE

Bluetooth Low Energy

### PHYSICAL SPECIFICATIONS

Dimensions: 8.0"L x 4.75"W x 3.12"H  
(203mm x 120mm x 80mm)

Weight: 1.2lbs (560g)

### ELECTRICAL

100-240 VAC, 50-60Hz