

GT2

Quick Start Guide



STEP 1: SELECT A MOUNTING LOCATION

BEST PRACTICES

1. Select a mounting location that provides the best view of the sky and the sun.
2. A flat horizontal mounting position (lying flat, facing skyward) is preferred but an alternate mounting orientation might be necessary depending on application and solar availability.
3. Vertical mounting orientations (solar panel side of device facing horizon) are acceptable.
4. Recommended mounting area size is 8.5" L x 3.5" W (216mm L x 90mm W).
5. Thoroughly clean the mounting area, especially if using VHB mounting.
6. DO NOT PAINT OR COVER THE GT2. Doing so may negatively impact product performance and battery life.
7. A covered or excessively dirty solar panel lens will reduce the GT2's ability to harvest solar energy. Sunlight limiting factors such as snow accumulation should be considered when determining GT2 mounting orientation.
8. For typical applications, two hours of direct sunlight per day is highly Recommended.

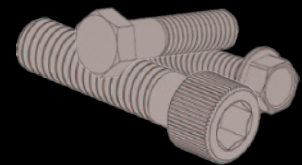
Additional information on mounting locations is available in the GT2 User Guide.

STEP 2: SELECT A MOUNTING METHOD

MECHANICAL MOUNTING

The GT2 can be mounted with the following Geoforce mounting accessories:

- Commercial Duty Reinforced Plastic Mounting Bezel for GT2 (**SKU: GT2-BEZEL-SS**)
- Heavy Duty Stainless Steel Mounting Bezel for GT2 (**SKU: GT2-BEZEL-RP**)



Additional information on each mechanical mounting method is available in the GT2 User Guide.

VHB HEAVY DUTY MOUNTING TAPE INSTALLATION

For installations that do not require a protective bezel and that are isolated from abuse, extreme weather, and temperatures, the GT2 has a pre-installed set of VHB adhesive pads that can be used to “peel and stick” to any clean surface above 50°F (10°C). The Geoforce VHB Installation and Removal Guide MUST be followed to ensure proper adhesion to the asset.

VHB ‘peel and stick’ is not recommended if using a protective bezel mounting option.

STEP 3: ASSOCIATE THE GT2 TO THE ASSET

Using Geoforce Track and Trace Web Application

1. Record the GT2 8-digit numerical serial number (ESN).
2. Record the asset name and serial number (on to which the GT2 was installed).
3. Login to the Track and Trace application, select (or create) the asset, and assign the device ESN to the asset.

Using Geoforce Mobile Field Tools Mobile App

1. Open the Geoforce Mobile Field Tools application.
2. Select (or create) the asset in mobile field tools.
3. Scan the QR code on the top surface of the GT2 to assign the device to the asset.

For additional information on device installation, association, and using various Geoforce applications, contact your Geoforce customer service representative and the GT2 User Guide.

**<https://helpdesk.geoforce.com>
helpdesk@geoforce.com
888.574.3878**



THIS SIDE SKYWARD
DO NOT PAINT OR COVER

ESN: 70092007



STEP 4: INITIALIZE THE GT2

TO BEGIN SERVICE

Using the pull tab, remove the magnet while outdoors with a good sky view.
The GT2 will flash its LED indicator green 5 seconds after magnet pull.

TO SUSPEND DEVICE OPERATION

To put the GT2 back into inventory storage mode, reinsert the pulltab magnet back into the device magnet slot.
The GT2 will flash its LED indicator red 5 seconds after magnet insertion.

NOTE: Saving the pulltab magnet is recommended for future disabling of the device.



WARNING: IF YOU DO NOT REMOVE THE MAGNET, THE GT2 WILL NOT WORK!